

B. iPadOS Application Installation

Step 1: Set up your school testing environment

Review section II: [Technology Guidelines](#) and section III: [Technology Setup](#) in detail.

Step 2: Update or download the iTester App.

If the iTester app was installed on your devices in the previous school year, the app will need to be updated.

- If automatic updates are enabled, no action is required.
- If automatic updates are not enabled on the iPad, follow the steps below to update the iTester app.
 1. Open the **App Store** on the iPad
 2. Tap your **Apple ID icon** or your profile picture in the top right corner.
 3. Scroll down to see pending updates.
 4. Tap **Update** next to the iTester app.

If the iTester app was not installed on your devices previously, follow the steps below to install the iTester application.

Download the iTester App from the Apple App Store

The iTester iPad application is a Single Instance application. Technology coordinators will select the MCAS during the initial setup of the app. If you do not already have the iTester app on your iPad, download it from the Apple App Store following the steps below.

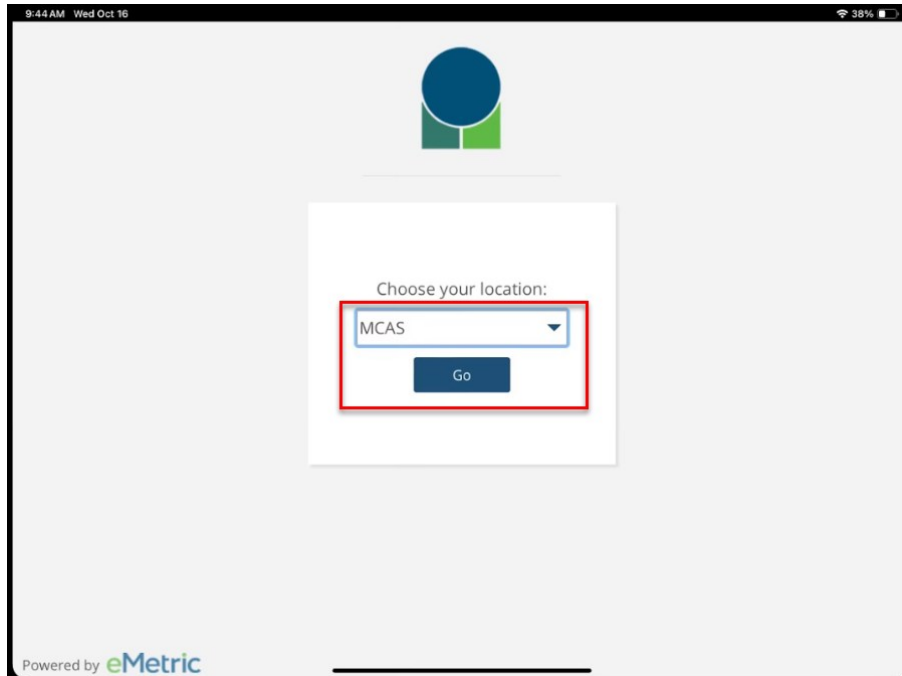
1. Open the **App Store** on the iPad.



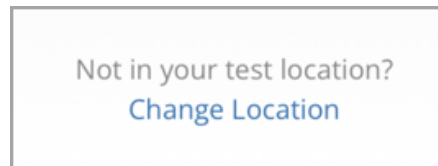
2. Search for **iTester**.
3. When you locate the iTester app, click **Get** to download it to the iPad.



4. Launch the iTester app.
5. Choose **MCAS** from the drop-down menu and then click **Go**. You will be directed to the student sign in screen for the MCAS Student Kiosk.



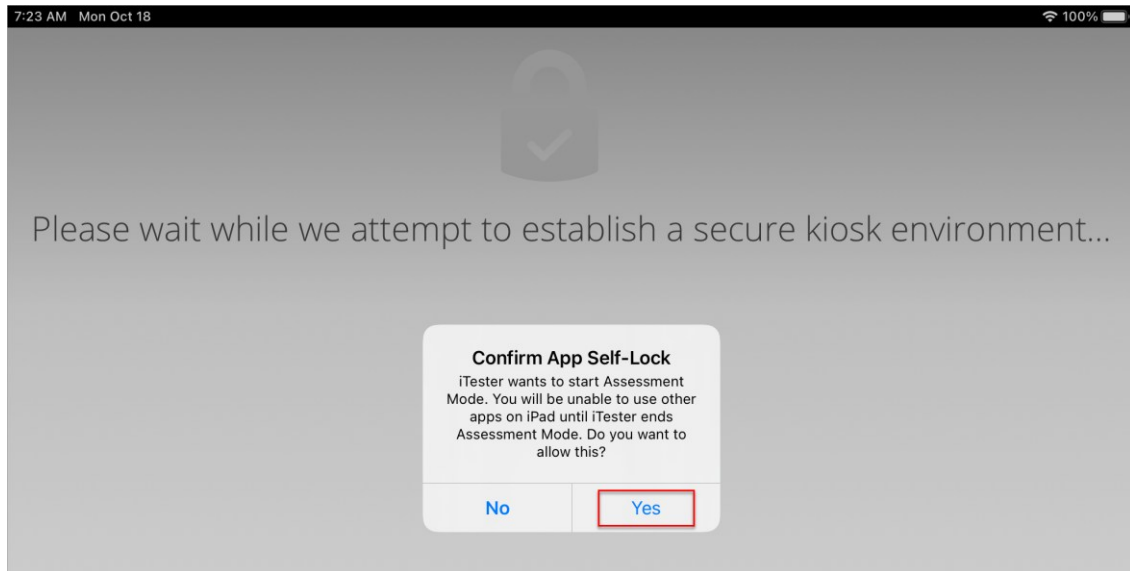
Note: If you select the wrong program in the **Choose your location** drop-down menu, select **Change Location** on the iTester login page.



6. When you are ready to complete Site Readiness for this configuration, see section V: [Site Readiness Testing and Site Certification](#).

Automatic Assessment Configuration

A feature in iPadOS called Assessment Mode (AM) (formerly known as Automatic Assessment Configuration [AAC]) works with iTester to lock down an iPad for online testing. Technology coordinators do not need to do anything to set up AM. When a student launches the iTester App and logs in to a test, and then logs in to a test session, AM will automatically prompt the user to enter single app mode.



This action disables features such as auto correction, define, spell check, predictive keyboard and some keyboard shortcuts. For a complete list, visit this [Apple Support page](#).

This feature helps ensure a secure test environment without requiring technology coordinators to use Mobile Device Manager Software or manually turn on guided access and change keyboard settings. AM is the preferred method of securing the iTester App and should be used in place of guided access. If guided access is on, it will override AM; therefore, guided access should be turned off to allow AM to function. No additional setup is necessary to enable AM.

C. Linux

Step 1: Set up your school technology

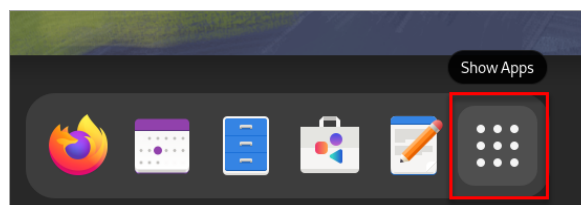
Review section II: [Technology Guidelines](#) and section III: [Technology Setup](#) in detail.

Step 2: Uninstall the MCAS Student Kiosk from the previous year.

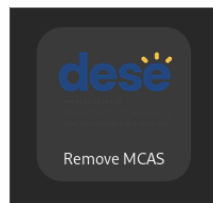
The Linux kiosk is updated each year. If your devices have a previous version of the Linux MCAS Student Kiosk, it will need to be uninstalled before downloading and installing the latest version. To uninstall a previous version of the MCAS Student Kiosk for Linux follow the steps below.

If your devices do not have a previous year's kiosk installed, skip to step 3: Download the MCAS Student Kiosk.

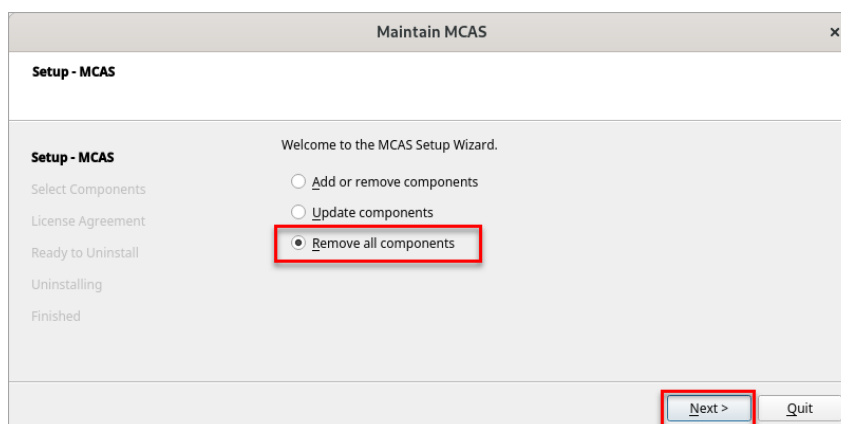
1. On the desktop of the device, select **Show Apps**.



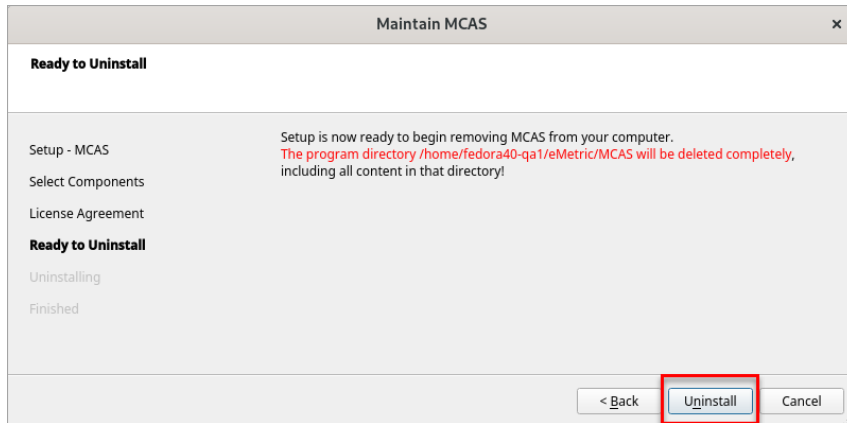
2. Select the icon **Remove MCAS**.



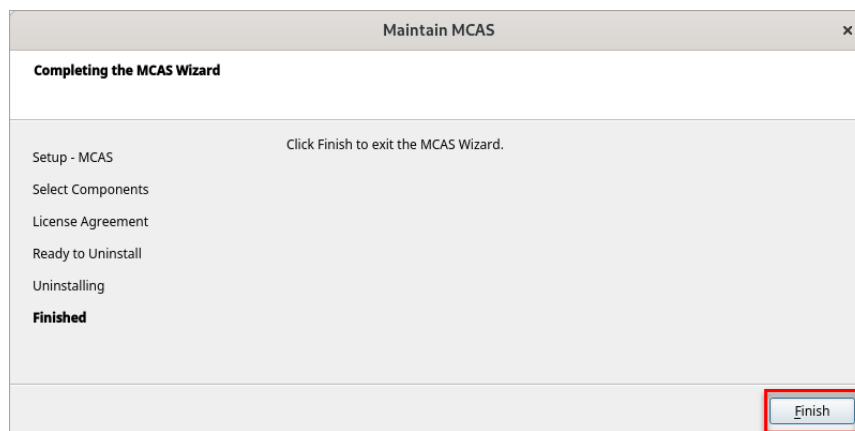
3. Select **Remove all components** and then select **Next**.



4. Select **Uninstall**.



5. Once completed, select **Finish** to exit the MCAS Wizard.



Follow the steps below to install the kiosk on all student testing devices running Linux.

Step 3: Download the MCAS Student Kiosk

1. Go to the [MCAS Portal](#) and log in with your username and password. If you need assistance logging in to the MCAS Portal, contact your school or district test coordinator.
2. On the portal home page, click **Administration**.
3. On the Administration home page, click **Student Kiosk for Linux**. The file will download to the "Downloads" folder.