

E. Windows OS

Step 1: Set up your school technology

Review section II: [Technology Guidelines](#) and section III: [Technology Setup](#) in detail.

Step 2: Download the MCAS Student Kiosk

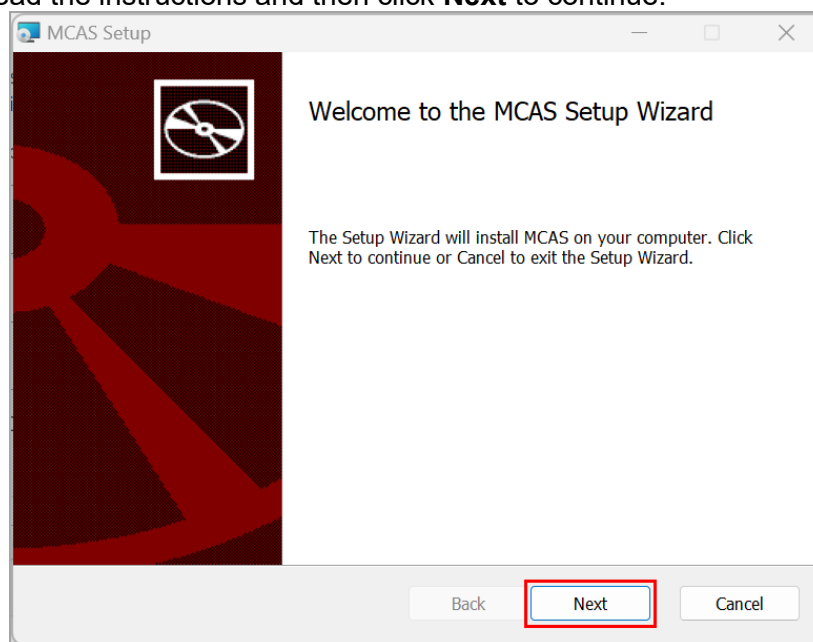
The Windows kiosk is updated each year. If your devices have a previous version of the MCAS Student Kiosk, the kiosk does not need to be uninstalled. The new kiosk can be installed on top of the old version by following the steps below.

1. Go to the [MCAS Portal](#) and log in with your username and password. If you need assistance logging in to the MCAS Portal, contact your school or district test coordinator.
2. On the portal home page, click **Administration**.
3. Click **Student Kiosk for Windows** to download the MCAS Student Kiosk to the device.

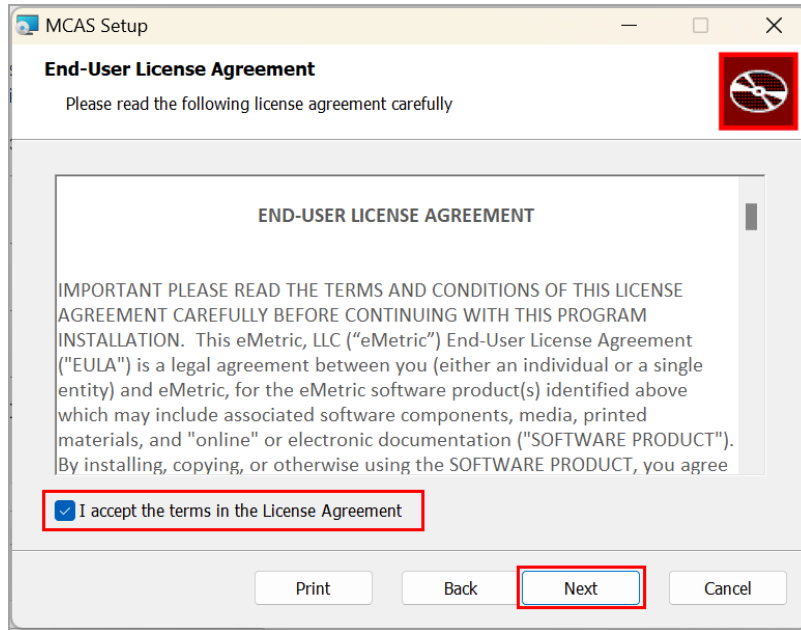
Step 3: Install the downloaded Kiosk

The MCAS Student Kiosk for Windows can be installed on the school network or on each individual student testing device. It is recommended that the kiosk is installed on each individual device to avoid network connection issues. For installing on each individual student testing device follow the steps below, or follow the steps for [Windows MSI Package Scripted Installation](#), or follow the steps for [Windows MSI Package Installation Via Group Policy](#).

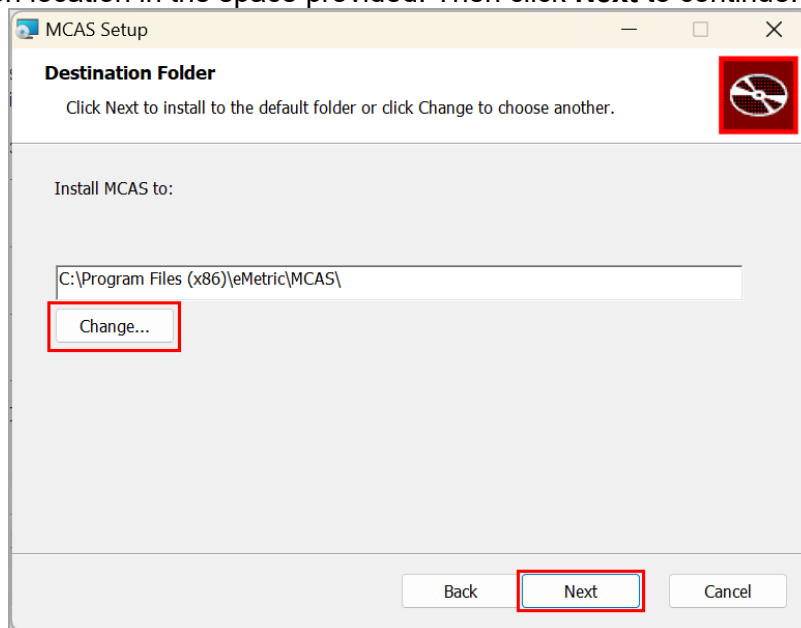
1. Click the installation file in the Downloads folder on the device. The Setup Wizard will open. Read the instructions and then click **Next** to continue.



2. Read the End-User License Agreement and check the I accept the terms in the License Agreement check box. Click **Next** to continue.



3. Use the default folder location for installation or click **Change** and type a different installation location in the space provided. Then click **Next** to continue.

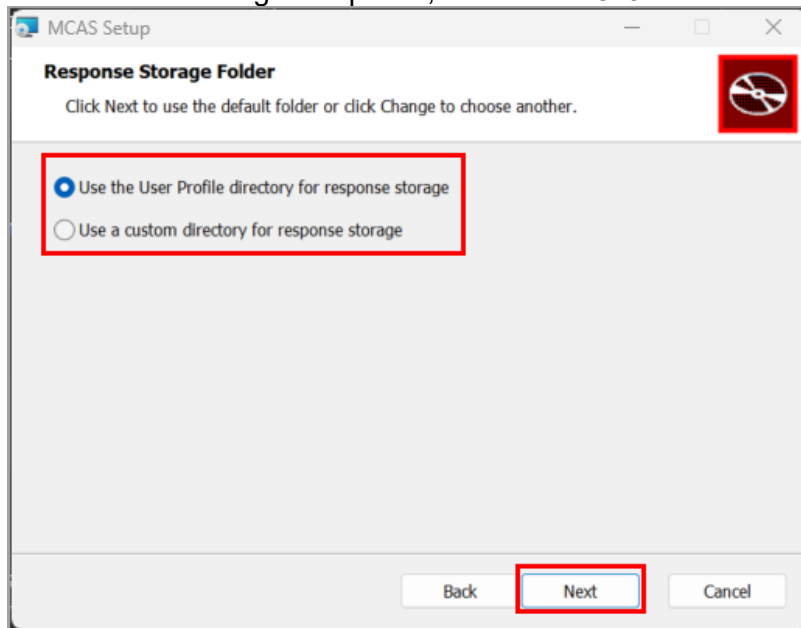


Note: You can choose to install the kiosk in a shared network folder or a local folder on the student testing device. It is recommended that the kiosk is installed on the individual student testing device instead of a network installation to avoid network connection issues (see section III, part A: [Network Connectivity](#)).

4. Select the directory to store student responses.

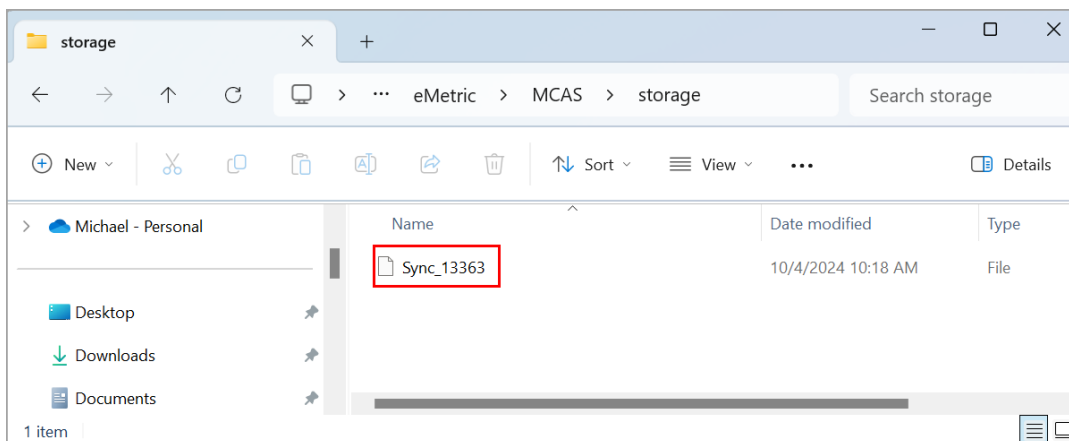
Important: In the event the student loses internet connectivity during testing, responses will be stored to this location. Additionally, this folder must have the appropriate permissions to allow test takers to write data.

Choose from the following two options, then click **Next**.



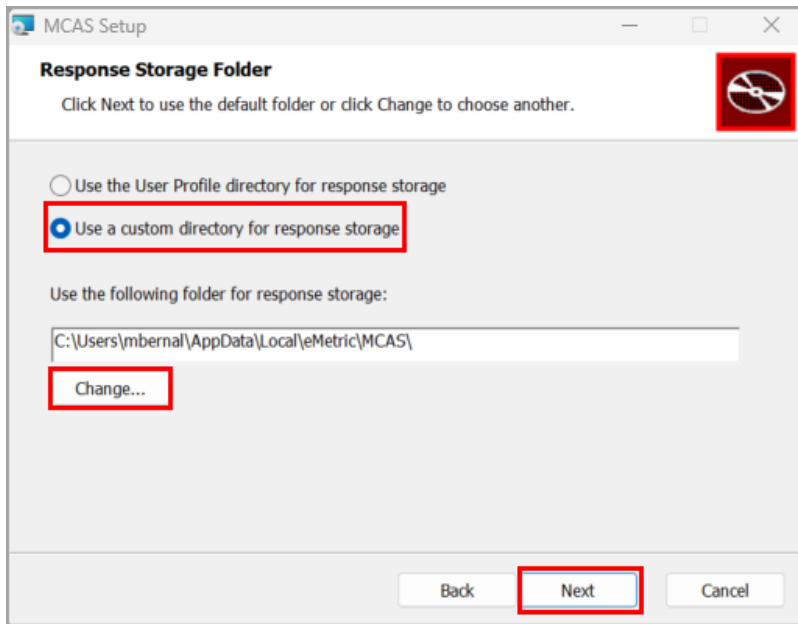
- **Use the User Profile directory for response storage:**

During kiosk installation, if you choose the default option to store the stored response files in the user profile, these files will have names like this format:

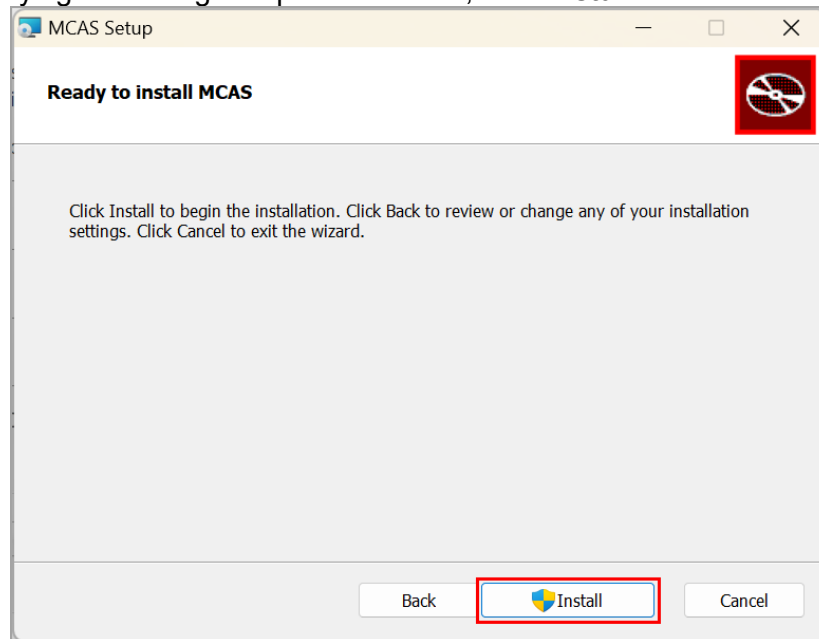


- **Use a custom directory for response storage:**

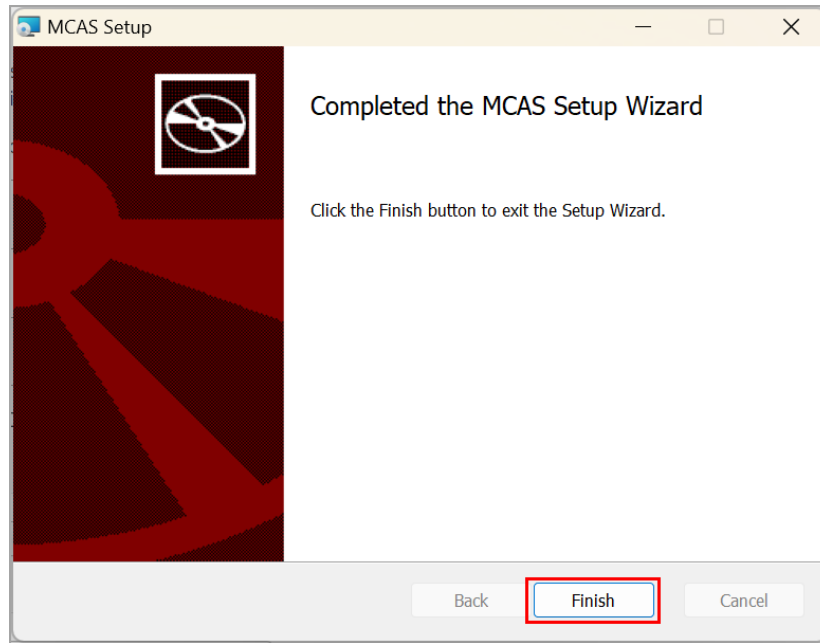
If you select **Save in the following directory**, you must manually enter the alternate path.



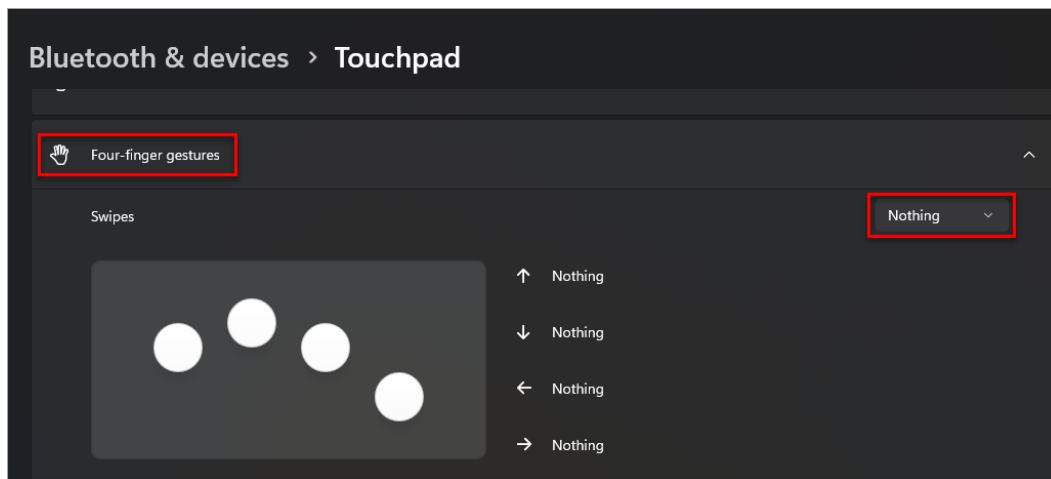
5. After verifying the storage response location, click **Install**.



6. Click **Finish** to complete the installation.



7. For Windows devices with touchpads, Four-finger gestures for swiping will need to be disabled. To disable go to **Settings > Bluetooth & devices > Touchpad**. Then locate Four-finger gestures and expand the section. Next, change the drop-down menu for Swipes to **Nothing**.



8. When you are ready to complete Site Readiness for this configuration, see section V: [Site Readiness Testing and Site Certification](#).

Windows MSI Package Scripted Installation

Network administrators can install the MCAS Student Kiosk via an installation script to be executed by an Admin account on the machine. The script can be written to run without any human interaction (quiet switch) and to install in the default directory (C:\Program Files) or any target directory of choice. Uninstalling the client can also be scripted.

Below are generic scripts that can be used for installation and uninstallation.

Script Examples

- <Source> = Complete path to the MCAS Student Kiosk MSI installation file, including .msi installation file name. Example: C:\Downloads\MCAS.msi
- <Target> = Complete path to the location where kiosk should be installed other than the default location (C:\Program Files). Example: C:\MCAS\Installation_Dir
- <APPDATALOCATION> = Complete path to the location for storing the cache and encrypted student responses created due to network interruptions. Example: D:\Cache.
Note: Ensure that this location is excluded from system restore software.

Installation Script

```
msiexec /I "<Source>" /quiet INSTALLDIR="<Target>"  
ITESTERAPPDATALOCATION="<APPDATALOCATION>" INSTALLLEVEL=2
```

Example: msiexec /I "C:\Downloads\MCAS.msi" /quiet INSTALLDIR="C:\MCAS"
ITESTERAPPDATALOCATION="D:\Cache" INSTALLLEVEL=2

Warning: If you do not specify ITESTERAPPDATALOCATION, then the Local Application Data folder located in the User Profile of the actively logged-in user will be used by default. If you do not specify INSTALLLEVEL=2, then the configuration required for setting the <APPDATALOCATION> will not be created.

Uninstallation Script

```
msiexec /X "<Source>" /quiet
```

Example: msiexec /X "C:\Downloads\MCAS.msi" /quiet

Windows MSI Package Installation Via Group Policy

Network administrators can use Microsoft Active Directory Group Policy to distribute the MCAS Student Kiosk MSI package to all client computers.

Follow the step-by-step instructions described in Microsoft's [Knowledge Base article](#).

Note: Default installation locations will be used when using Group Policy to distribute the MCAS Student Kiosk. This option will also not allow systematically specifying a network location for caching and storing encrypted student responses created due to network interruptions. The local Application Data folder located in the User Profile of the actively logged-in user will be used by default.

Windows Network Kiosk Installation

To install the MCAS Student Kiosk on a school network:

1. Complete the local kiosk installation listed above on the machine that will host the application.
2. Configure the stored response location to network share or leave as default during installation.
3. On the student testing devices, create a shortcut to the application on the network. The shortcut created should point to MCAS.exe.
4. Ensure that users have read/write/modify access to stored response directory configured in Step 3.